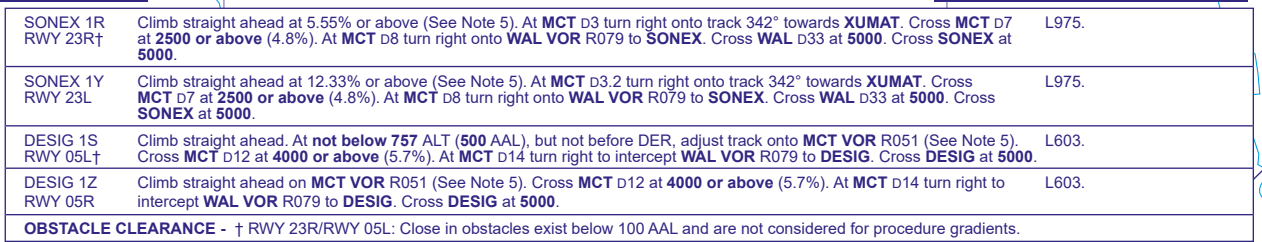


**MANCHESTER**  
**SONEX 1R 1Y/DESIG 1S 1Z**



- 1 SIDs reflect Noise Preferential Routings. See EGCC AD 2.21 for Noise Abatement Procedures.
- 2 En-route cruising levels will be allocated after departure by 'Scottish Control'. **Do not climb above SID level until cleared by ATC.**
- 3 Callsign for RTF frequency used **when instructed** after take-off 'Scottish Control'. On first contact advise callsign/SID designator current altitude and cleared altitude.
- 4 Maximum 250KIAS below FL100 unless otherwise authorised.
- 5 **WARNING: RUNWAY 23L/05L. In the event of a missed approach on runway 23R/05R ATC may instruct aircraft which have departed from runway 23L/05L to make a LEFT turn in order to establish separation.**
- 6 Expect first CPDLC Data Link Authority to be EGTT.

AD 2-EGCC-6-5